

## Referências Bibliográficas

ALLOWAY, T. P. **Automated Working: Memory Assessment: Manual**. Pearson, 2007.

ALVES, I. C. B.; DUARTE, J. L. M. Padronização Brasileira da Escala de Maturidade Mental Colúmbia. In: Alves, I. C. B. (Org.). **Escala de Maturidade Mental Columbia. Manual para Aplicação e Interpretação**. 1 ed. São Paulo: Casa do Psicólogo, 1993.

AMERICAN PSYCHOLOGICAL ASSOCIATION. COMMITTEE ON PROFESSIONAL STANDARDS; AMERICAN PSYCHOLOGICAL ASSOCIATION. BOARD OF SCIENTIFIC AFFAIRS. COMMITTEE ON PSYCHOLOGICAL TESTS; ASSESSMENT. **Guidelines for computer-based tests and interpretations**. The Association, 1986.

ANDERSON, P. Assessment and development of executive function (EF) during childhood. **Child Neuropsychology**, v. 8, n. 2, p.71-82, 2002.

ANDERSON, V.; NORTHAM, E.; WRENNALL, J.; HENDY, J. **Developmental neuropsychology: A clinical approach**. New York: Psychology Press, 2001.

ARDILA, A. On the evolutionary origins of executive functions. **Brain and Cognition**, v. 68, n. 1, p. 92-99, 2008.

ARGOLLO, N.; BUENO, O. F. A.; SHAYER, B.; GODINHO, K.; ABREU, K.; DURÁN, P.; ASSIS, A.; LIMA, F.; SILVA, T.; GUIMARÃES, J.; CARVALHO, R.; MOURA, I.; SEABRA, A. G. Adaptação transcultural da Bateria NEPSY - avaliação neuropsicológica do desenvolvimento: estudo-piloto. **Avaliação psicológica**, Porto Alegre, v. 8, n. 1, abr. 2009 .

ATKINSON, R. C.; SHIFFRIN, R. M. Human memory: A proposed system and its control processes. In: SPENCE, K. W.; SPENCE, J. T. Spence (Eds.), **The psychology of learning and motivation: Advances in research and theory**, Vol. II. New York: Academic Press, 1968. p. 89-195.

BADDELEY, A. D. Is working memory still working? **European psychologist**, v. 7, n. 2, p. 85-97, 2002.

BADDELEY, A. D.; HITCH, G. J. Developments in the concept of working memory. **Neuropsychology**, v. 8, n. 4, p. 485-493, 1974.

BANICH, M. T. **Cognitive neuroscience and neuropsychology**. Houghton Mifflin College Division, 2004.

BARKLEY, R. A. The executive functions and self-regulation: An evolutionary neuropsychological perspective. **Neuropsychology Review**, v. 11, n. 1, p. 1-29, 2001.

BARKLEY, R. A. Behavioral inhibition, sustained attention, and executive functions: Constructing a unifying theory of ADHD. **Psychological Bulletin**, v. 121, n. 1, p. 65-94, 1997.

BARON, I. S. **Neuropsychological evaluation of the child**. New York: Oxford University Press, 2003.

BARRET, M. Early lexical development. In: FLETCHER, P.; MACWHITNEY, B. (Eds.). **The handbook of child language**. Oxford: Blackwell, 1995, p. 362-391.

BARROS, P. M.; HAZIN, I. Avaliação das Funções Executivas na Infância: Revisão dos Conceitos e Instrumentos. **Psicologia em Pesquisa**, v. 7, n. 1, p. 13-22, 2013.

BECHARA, A.; DAMÁSIO, H.; DAMÁSIO, A. R. Emotion, decision making and the orbitofrontal cortex. **Cerebral Cortex**, v. 10, n. 3, p. 295-307, 2000.

BECHARA, A.; DAMÁSIO, H.; DAMÁSIO, A. R.; LEE, G. P. Different contributions of the human amygdala and the ventromedial prefrontal cortex to decision-making. **Journal of Neuroscience**, v. 19, n. 13, p. 5473-5481, 1999.

BECK, D. M.; SCHAEFER, C.; PANG, K.; CARLSON, S. M. Executive function in preschool children: Test-retest reliability. **Journal of Cognition and Development**, v. 12, n. 2, p. 169-193, 2011.

BERLIN, L.; BOHLIN, G. Response inhibition, hyperactivity, and conduct problems among preschool children. **Journal of Clinical Child and Adolescent Psychology**, v. 31, n. 2, p. 242-251, 2002.

BENTON, A. Prefrontal injury and behavior in children. **Developmental Neuropsychology**, v. 7, n. 3, p. 275-282, 1991.

BICKEL, W. K.; JARMOLOWICZ, D. P.; MUELLER, E. T.; GATCHALIAN, K. M.; McCLURE, S. M. Are executive function and impulsivity antipodes? A conceptual reconstruction with special reference to addiction. **Psychopharmacology**, v. 221, n. 3, p. 361-387, 2012.

BLAKEMORE, S. J.; CHOUDHURY, S. Development of the adolescent brain: implications for executive function and social cognition. **Journal of child psychology and psychiatry**, v. 47, n. 3- 4, p. 296-312, 2006.

BLACKWELL, K. A.; CEPEDA, N. J.; MUNAKATA, Y. When simple things are meaningful: working memory strength predicts children's cognitive flexibility. **Journal of experimental child psychology**, v. 103, n. 2, p. 241-249, 2009.

BLOOM, L. **The transition from infancy to language: Acquiring the power of expression**. New York: Cambridge University Press, 1993.

BORKOWSKY, J. G.; BURKE, J. E. Theories, models and measurements of executive functioning: An information processing perspective. In: LYON, G. R.; KRASNEGOR, N. A. (Eds.) **Attention, memory and executive function**. Baltimore: Paul H. Brookes, 1996. p. 235-262.

BRAINERD, C.J. The stage question in cognitive-developmental theory. **Behavioral and Brain Science.**, v. 1, p. 173-213, 1978.

BRAVER, T. S.; COHEN, J. D.; BARCH, D. M. The role of the prefrontal cortex in normal and disordered cognitive control: A cognitive neuroscience perspective. In: STUSS, D. T.; KNIGHT, R. T. (Eds.). **Principles of frontal lobe function**. Oxford: Oxford University Press, 2002.

BRICKNER, R. M. An interpretation of frontal lobe function based upon the study of a case of partial bilateral frontal lobectomy. **Research Publications - Association for Research in Nervous and Mental Disease**, v. 13, p. 259-351, 1934.

BROADBENT, D. **Perception and Communication**. London: Pergamon Press, 1958.

BROCKI, K. C.; BOHLIN, G. Executive functions in children aged 6 to 13: A dimensional and developmental study. **Developmental Neuropsychology**, v. 26, n. 2, p. 571-593, 2004.

BROWNDYKE, J. N.; ALBERT, A. L.; MALONE, W.; SCHATZ, P.; PAUL, R. H.; COHEN, R. A.; TUCKER, K. A.; GOUVIER, W. D. Computer-related anxiety: examining the impact of technology-specific affect on the performance of

a computerized neuropsychological assessment measure. **Applied Neuropsychology**, v. 9, n. 4, p. 210-218, 2002.

BUCHANAN, T. Online assessment: Desirable or dangerous?. **Professional Psychology: Research and Practice**, v. 33, n. 2, p. 148, 2002.

BUCHANAN, T.; JOHNSON, J. A.; GOLDBERG, L. R. Implementing a five-factor personality inventory for use on the internet. **European Journal of Psychological Assessment**, v. 21, n. 2, p. 115-127, 2005.

BURGESS, P. W. Theory and methodology in executive function research. In: RABBITT, P. (Ed.), **Methodology of frontal and executive functions**. Hove: UK: Psychology Press, 1997. p. 91-115.

BURGESS, P. W.; ALDERMAN, N.; FORBES, C.; COSTELLO, A.; COATES, L. M. DAWSON, D. R.; ..., CHANNON, S. The case for the development and use of "ecologically valid" measures of executive function in experimental and clinical neuropsychology. **Journal of the International Neuropsychological Society**, v. 12, n. 2, p. 194-209, 2006.

BURGESS, P. W.; SIMONS, J. S. Theories of frontal lobe executive function: Clinical applications. In: HALLIGAN, P. W.; WADE, D. T. (Eds.), **Effectiveness of rehabilitation for cognitive deficits**. Oxford, MA: Oxford University Press, 2005, p. 211-232.

CAPILLA, A.; ROMERO, D.; MAESTÚ, F; CAMPO, P.; FERNADÉZ, S.; GONZÁLEZ-MARQUÉS, J.; FERNANDÉZ, A.; ORTIZ, T. Emergence and brain development of executive functions. **Acta Spanish Psychiatry**, v. 32, n. 6, p. 377-386, 2004.

CARLBRING, P.; BRUNT, S.; BOHMAN, S.; AUSTIN, D.; RICHARDS, J.; ÖST, L. G.; Andersson, G. Internet vs. paper and pencil administration of questionnaires commonly used in panic/agoraphobia research. **Computers in Human Behavior**, v. 23, n. 3, p. 1421-1434, 2007.

CARLSON, S. M. Developmentally sensitive measures of executive function in preschool children. **Developmental neuropsychology**, v. 28, n. 2, p. 595-616, 2005.

CARLSON, S. M.; MOSES, L. J. Individual differences in inhibitory control and children's theory of mind. **Child development**, v. 72, n. 4, p. 1032-1053, 2001.

CHARCHAT, H.; NITRINI, R.; CARAMELLI, P.; SAMESHIMA, K. Investigaç o de Marcadores Cl nicos dos Est gios Iniciais da Doena de

Alzheimer com Testes Neuropsicológicos Computadorizados. **Psicologia: Reflexão e Crítica**, v. 14, n. 2, p. 305-316, 2001.

CHELUNE, G. J.; BAER, R. A. Developmental norms for the Wisconsin Card Sorting test. **Journal of Clinical and Experimental Neuropsychology**, v. 8, n. 3, p. 219-228, 1986.

CHEVALIER, N., BLAYE, A. Cognitive flexibility in preschoolers: The role of representation activation and maintenance. **Developmental Science**, v. 11, p. 339-353, 2008.

CIESIELSKI, K. T.; LESNIK, P. G.; AHLFORS, S. P.; SAVOY, R.; BAEDORF, L. Developmental pattern of activation within the cortical–cerebellar subsystem in a new categorical n-back task. **Abstracts of HBM 2004 Meeting**, Budapest, Hungary, 2004.

COBRINIK, L. The performance of brain-injured children on hidden-figure tasks. **The American Journal of Psychology**, v. 72, n. 4, p. 566-571, 1959.

COHEN, J. D.; PERLSTEIN, W. M.; BRAVER, T. S.; NYSTROM, L. E.; NOOL, D. C.; JONIDES, J.; SMITH, E. E. Temporal dynamics of brain activation during a working memory task. **Nature**, v. 386, p. 604-608, 1997.

COLES, M. E.; COOK, L. M.; BLAKE, T. R. Assessing obsessive compulsive symptoms and cognitions on the internet: evidence for the comparability of paper and Internet administration. **Behaviour Research and Therapy**, v. 45, n. 9, p. 2232-2240, 2007.

COMO, P. G. Neuropsychological function in Tourette syndrome. **Advances in neurology**, v. 85, p. 103, 2001.

CONSELHO FEDERAL DE PSICOLOGIA – CFP. **Resolução CFP nº002/2003**. Define e regulamenta o uso, a elaboração e a comercialização de testes psicológicos, 2003.

CONWAY, A.; STIFTER, C. A. Longitudinal antecedents of executive function in preschoolers. **Child Development**, v. 83, n. 3, p. 1022-1036, 2012.

CRAGG, L.; NATION, K. Self-ordered pointing as a test of working memory in typically developing children. **Memory**, v. 15, n. 5, p. 526-535, 2007.

CRONE, E. A. Executive functions in adolescence: inferences from brain and behavior. **Developmental science**, v. 12, n. 6, p. 825-830, 2009.

CRONE, E. A.; DONOHUE, S. E.; HONOMICHL, R.; WENDELKEN, C.; BUNGE, S. A. Brain regions mediating flexible rule use during development. **The Journal of Neuroscience**, v. 26, n. 43, p. 11239-11247, 2006.

D'ELIA, L.; SATZ, P. **Color Trails 1 and 2**. Psychological Assessment, Odessa, 1989.

DAMÁSIO, A. R. **Descartes' error: Emotion, reason, and the human brain**. New York: Grosset /Putnam, 1994.

DAMÁSIO, A. R. The somatic marker hypothesis and the possible functions of the prefrontal cortex. **Philosophical Transactions of the Royal Society of London** (series B), v. 351, n. 1346, p. 1413-1420, 1996.

DANCEY, Christine P.; REIDY, John. **Estatística sem matemática para psicologia: usando SPSS para Windows**. Artmed, 2006.

DE BUSTAMANTE CARIM, D; MIRANDA, M. C.; BUENO, O. F. A. Tradução e Adaptação para o Português do Behavior Rating Inventory of Executive Function–BRIEF. **Psicologia: Reflexão e Crítica**, v. 25, n. 4, p. 653-661, 2012.

DE FRIAS, C. M.; DIXON, R. A.; STRAUSS, E. Structure of four executive functioning tests in healthy older adults. **Neuropsychology**, v. 20, n. 2, p. 206-214, 2006.

DE MELLO, C. B.; ARGOLLO, N.; SHAYER, B. P. M.; ABREU, N.; GODINHO, K., DURÁN, P.; ...; AMODEO BUENO, O. F. Versão abreviada do WISC-III: Correlação entre QI estimado e QI total em crianças brasileiras. **Psicologia: Teoria e Pesquisa**, v. 27, n. 2, p. 149-155, 2011.

DEAK, G. O. The growth of flexible problem solving: Preschool children use changing verbal cues to infer multiple word meanings. **Journal of Cognition and Development**, 1, 157–191, 2000.

DELIS, D.; KAPLAN, E.; KRAMER, J. H. **Delis Kaplan Executive Function System technical manual**. San Antonio, TX: The Psychological Corporation, 2001.

DENCKLA, M. B. Attention Deficit Hyperactivity Disorder: The Childhood Co-Morbidity That Most Influences Disability Burden in Tourette Syndrome. **Tourette syndrome**, v. 99, p. 17, 2006.

DENCKLA, M. B. **Measurement of executive function**. 1994.

DENCKLA, M. B. A theory and model of executive function: A neuropsychological perspective. In: LYON, G. R.; KRASNEGOR, N. A. (Eds.) **Attention, memory and executive function**. Baltimore: Paul H. Brookes, 1996. p. 263-278.

DEROCHE, K.; WELSH, M. Twenty-five years of research on neurocognitive outcomes in early-treated phenylketonuria: intelligence and executive function. **Developmental neuropsychology**, v. 33, n. 4, p. 474-504, 2008.

DIAMOND, A. Evidence of robust recognition memory early in life even when assessed by reaching behavior. **Journal of Experimental Child Psychology**, v. 59, n. 3, p. 419-456, 1995.

DIAMOND, A. Development of the Ability to Use Recall to Guide Action, as Indicated by Infants' Performance on A not B. **Child Development**, v. 56, p. 868-883, 1985.

DIAMOND, A. The early development of executive functions. In: BIALYSTOCK, E.; CRAIK, F. I. M. (Eds.), **Lifespan cognition: Mechanisms of change**. Oxford, England: Oxford University Press, 2006. p. 70-95.

DIAMOND, A. Executive functions. **Annual review of psychology**, v. 64, p. 135-168, 2013.

DIAMOND, A.; BARNETT, W. S.; THOMAS, J.; MUNRO, S. Preschool program improves cognitive control. **Science (New York, NY)**, v. 318, n. 5855, p. 1387, 2007.

DIAMOND, A.; KIRKHAM, N.; AMSO, D. Conditions under which young children can hold two rules in mind and inhibit a prepotent response. **Developmental psychology**, v. 38, n. 3, p. 352-362, 2002.

DIAMOND, A.; TAYLOR, C. Development of an aspect of executive control: Development of the abilities to remember what I said and to "Do as I say, not as I do". **Developmental psychobiology**, v. 29, n. 4, p. 315-334, 1996.

DIAS, N. M.; MENEZES, A.; SEABRA, A. G. Alterações das funções executivas em crianças e adolescentes. **Estudos Interdisciplinares em Psicologia**, v. 1, n. 1, p. 80-95, 2010.

DONDERS, F. C. On the speed of mental processes. **Acta Psychologica**, v. 30, p. 412-431, 1969.

DUFFY, J. D.; CAMPBELL, J. J. The regional prefrontal syndromes: a theoretical and clinical overview. **Journal of Neuropsychiatry**, v. 6, n. 4, p. 379-387, 1994.

DUNCAN, J. **Attention, intelligence, and the frontal lobes**. 1995.

DUNCAN, J.; OWEN, A. M. Common regions of the human frontal lobe recruited by diverse cognitive demands. **Trends in neurosciences**, v. 23, n. 10, p. 475-483, 2000.

DUNN, T. G.; LUSHENE, R. E.; O'NEIL, H. F. Complete automation of the MMPI and a study of its response latencies. **Journal of Consulting and Clinical Psychology**, v. 39, n. 3, p. 381, 1972.

EDDY, C. M.; RIZZO, R.; CAVANNA, A. E. Neuropsychological aspects of Tourette syndrome: a review. **Journal of psychosomatic research**, v. 67, n. 6, p. 503-513, 2009.

ELLIOTT, R. Executive functions and their disorders Imaging in clinical neuroscience. **British Medical Bulletin**, v. 65, n. 1, p. 49-59, 2003.

ELSTON, G. N.; BENAVIDES-PICCIONE, R.; DEFELIPE, J. The pyramidal cell in cognition: A comparative study in human and monkey. **The Journal of Neuroscience**, v. 21, n. 17, p. 1-5, 2001.

ELWOOD, D. L. Automation of psychological testing. **American Psychologist**, v. 24, n. 3, p. 287, 1969.

EMSLIE, H.; WILSON, F.; BURDEN, V.; NIMMO-SMITH, I.; WILSON, B. A. **Behavioural Assessment of the Dysexecutive Syndrome for Children (BADSC)**. London, UK: Harcourt Assessment/The Psychological Corporation, 2003.

ERIKSEN, B. A.; ERIKSEN, C. W. Effects of noise letters upon the identification of a target letter in a nonsearch task. **Perception & psychophysics**, v. 16, n. 1, p. 143-149, 1974.

ESLINGER, P. J.; DAMÁSIO, A. R. Severe disturbance of higher cognition after bilateral frontal lobe ablation: patient EVR. **Neurology**, v. 35, n. 12, p. 1731-1741, 1985.

ESPY, K. A. Using developmental, cognitive, and neuroscience approaches to understand executive control in young children. **Developmental Neuropsychology**, v. 26, p. 379-384, 2004.



ESPY, K. A.; CWIK, M. F. The development of a trail-making test in young children: the TRAILS-P. **Clinical Neuropsychology**, v. 18, p.1-12, 2004.

ESPY, K. A.; KAUFMANN, P. M.; McDIARMID, M. D.; GLISKY, M. L. Executive functioning in preschool children: Performance on A-not-B and other delayed response format tasks. **Brain and Cognition**, v. 41, n. 2, p. 178-199, 1999.

FIGUEIREDO, V. L. M.; NASCIMENTO, E. Desempenhos nas duas tarefas do subteste dígitos do WISC-III e do WAIS-III. **Psicologia: Teoria e Pesquisa**, v. 23, p. 313-318, 2007.

FISK, J. E.; SHARP, C. A. Age-related impairment in executive functioning: Updating, inhibition, shifting, and access. **Journal of Clinical and Experimental Neuropsychology**, v. 6, n. 7, p. 874-890, 2004.

FRANZEN, M. D.; WILHELM, K. L. Conceptual foundations of ecological validity in neuropsychological assessment. In: SBORDONE, R. J.; LONG, C. J. (Ed). **Ecological validity of neuropsychological testing**. Delray Beach, FL, England: Gr Press/St Lucie Press, 1996. p. 91-112.

FRIEDMAN, N. P.; HABERSTICK, B. C.; WILLCUTT, E. G.; MIYAKE, A.; YOUNG, S. E.; CORLEY, R. P.; HEWITT, J. K. Greater attention problems during childhood predict poorer executive functioning in late adolescence. **Psychological Science**, v. 18, n. 10, p. 893-900, 2007.

FRYE, D., ZELAZO, P. D.; PALFAI, T. Theory of mind and rule-based reasoning. **Cognitive Development**, v. 10, n. 4, p. 483-527, 1995.

FUGGETTA, G. P. Impairment of executive functions in boys with attention deficit/hyperactivity disorder. **Child Neuropsychology**, v. 12, n. 1, p. 1-21, 2006.

FUHS, M. W.; DAY, J. D. Verbal ability and executive functioning development in preschoolers at head start. **Developmental psychology**, v. 47, n. 2, p. 404, 2011.

FUSTER, J. M. Network memory. **Trends in neurosciences**, v. 20, n. 10, p. 451-459, 1997.

GARON, N.; BRYSON, E, SMITH, I. Executive function in preschoolers: A review using an integrative framework. **Psychological Bulletin**, v. 134, n. 1, p. 31-60, 2008.

GATHERCOLE, S. E. Cognitive approaches to the development of short-term memory. **Trends in cognitive sciences**, v. 3, n. 11, p. 410-419, 1999.

GATHERCOLE, S. E. The development of memory. **Journal of Child Psychology and Psychiatry**, v. 39, n. 1, p. 3-27, 1998.

GATHERCOLE, S. E.; BADDELEY, A. D. **Working memory and language**. Hove, England: Erlbaum, 1993.

GATHERCOLE, S. E.; PICKERING, S. J.; AMBRIDGE, B.; WEARING, H. The structure of working memory from 4 to 15 years of age. **Developmental Psychology**, v. 40, n. 2, p. 177-190, 2004.

GERSTADT, C. L.; HONG, Y. J.; DIAMOND, A. The relationship between cognition and action: performance of children 3<sup>1/2</sup>-7 years old on a stroop-like day-night test. **Cognition**, v. 53, n. 2, p. 129-153, 1994.

GEVINS, A. S.; CUTILLO, B. C. Neuroelectric evidence for distributed processing in human working memory. **Electroencephalography and Clinical Neurophysiology**, v. 87, p. 128-143, 1993.

GIEDD, J. N.; BLUMENTHAL, J.; JEFFRIES, N. O.; CASTELLANOS, F. X.; LIU, H.; ZIJDENBOS, A.; ...; RAPOPORT, J. L. Brain development during childhood and adolescence: a longitudinal MRI study. **Nature neuroscience**, v. 2, n. 10, p. 861-863, 1999.

GILBERSTADT, H.; LUSHENE, R.; BUEGEL, B. Automated assessment of intelligence: The TAPAC test battery and computerized report writing. **Perceptual and motor skills**, v. 43, n. 2, p. 627-635, 1976.

GIOIA, G. A.; ISQUITH, P. K.; GUY, S. C.; KENWORTHY, L. **Behavior Rating Inventory of Executive Function**. Lutz, FL: Psychological Assessment Resources, 1996.

GIOIA, G. A.; ISQUITH, P. K.; KENWORTHY, L.; BARTON, R. M. Profiles of everyday executive function in acquired and developmental disorders. **Child Neuropsychology**, v. 8, n. 2, p. 121-137, 2002.

GOLDMAN-RAKIC, P. S. Regional and cellular fractionation of working memory. **Proceedings of the National Academy of Sciences**, v. 93, n. 24, p. 13473-13480, 1996.

GRANT, D. A.; BERG, E. A. A behavioral analysis of degree of reinforcement and ease of shifting to new responses in a Weigl-type card sorting problem. **Journal of Experimental Psychology**, v. 34, p. 404-411, 1948.

GROSS, J. J. **Handbook of emotion regulation**. Guilford Press, 2009.

GUY, S.; ISQUITH, P.; GIOIA, G. **Behavior Rating Inventory of Executive Function – Self Report Version**. Odessa, Fla.: Psychological Assessment Resources, Inc, 2004.

HAMDAN, A. C.; PEREIRA, A. P. de A. Avaliação neuropsicológica das funções executivas: considerações metodológicas. **Psicologia: Reflexão e crítica**, v. 22, n. 3, p. 386-393, 2009.

HANANIA, R.; SMITH, L. B. Selective attention and attention switching: towards a unified developmental approach. **Developmental Science**, v. 13, n. 4, p. 622-635, 2010.

HAPPANEY, K. R.; ZELAZO, P. D.; STUSS, D. T. Orbitofrontal function: A developmental perspective. **Brain and Cognition**, v. 55, n. 1, p. 1-10, 2004.

HARLOW, J. M. Recovery from the passage of an iron bar through the head. **Publications of the Massachusetts Medical Society**, v. 2, p. 327-46, 1868.

HAYES, S.; DONNELLAN, C.; STOKES, E. The measurement and impairment of executive function after stroke and concepts for physiotherapy. **Physical Therapy Reviews**, v. 16, n. 3, p. 178-190, 2011.

HEATON, R. K., CHELUNE, G. J., TALLEY, J. L., KAY, G. G., CURTISS, G. **Teste Wisconsin de Classificação de Cartas: manual revisado e ampliado; adaptação e padronização brasileira**. CUNHA, J. A. e cols. (2005). São Paulo: Casa do Psicólogo, 2005.

HEATON, R. K., CHELUNE, G. J., TALLEY, J. L., KAY, G. G., CURTISS, G. **Wisconsin Card Sorting Test Manual**. Lutz, FL: Psychological Assessment Resources, Inc., 1993.

HEBB, D. O. Intelligence in man after large removals of cerebral tissue: Report of four left frontal lobe cases. **The Journal of General Psychology**, v. 21, n. 1, p. 73-87, 1939.

HELLAND, T.; ASBJØRNSSEN, A. Executive functions in dyslexia. **Child Neuropsychology**, v. 6, n. 1, p. 37-48, 2000.

HERBERT, M. The concept and testing of brain-damage in children: A review. **Journal of Child Psychology and Psychiatry**, v. 5, n. 3-4, p. 197-216, 1964.

HILL, E. L. Evaluating the theory of executive dysfunction in autism. **Developmental review**, v. 24, n. 2, p. 189-233, 2004.

HITCH, G. J.; HALLIDAY, S.; SCHAAFSTAL, A. M.; SCHRAAGEN, J. M. C. Visual working memory in young children. **Memory & Cognition**, v. 16, n. 2, p. 120-132, 1988.

HONGWANISHKUL, D.; HAPANNEY, K. R.; LEE, W. S.; ZELAZO, P. D. Assessment of hot and cool executive function in young children: Age-related changes and individual differences. **Developmental neuropsychology**, v. 28, n. 2, p. 617-644, 2005.

HUETTEL, S. A.; MISIUREK, J.; JURKOWSKI, A. J.; McCARTHY, G. Dynamic and strategic aspects of executive processing. **Brain research**, v. 1000, n. 1, p. 78-84, 2004.

HUGHES, C.; ENSOR, R.; WILSON, A.; GRAHAM, A. Tracking executive function across the transition to school: A latent variable approach. **Developmental Neuropsychology**, v. 35, n. 1, p. 20-36, 2009.

HUGHES, C.; GRAHAM, A. Executive functions and development. In: J. REED J.; WARNER-ROGERS, J. **Child Neuropsychology: Concepts, Theory, and Practice**. Willey-Blackwell, 2008. p. 264-284.

HUGHES, C.; GRAHAM, A. Measuring executive functions in childhood: Problems and solutions?. **Child and adolescent mental health**, v. 7, n. 3, p. 131-142, 2002.

HUIZINGA, M.; DOLAN, C. V.; VAN DER MOLEN, M. W. Age-related change in executive function: Developmental trends and a latent variable analysis. **Neuropsychologia**, v. 44, p. 2017-2036, 2006.

INTERNATIONAL TEST COMMISSION. International guidelines for test use. **International Journal of Testing**, v. 1, n. 2, p. 93-114, 2001.

ISAACS, E. B.; VARGHA-KHADEM, F. Differential course of development of spatial and verbal memory span: A normative study. **British Journal Developmental Psychology**, v. 7, n. 4, p. 377-380, 1989.

ISQUITH, P.; CRAWFORD, J.; ESPY, K.; GIOIA, G. Assessment of executive function in preschool-aged children, **Mental Retardation and Developmental Disabilities Research Reviews**, v. 11, n. 3, p. 209-215, 2005.

JACQUES, S.; ZELAZO, P.D. The Flexible Item Selection Task (FIST): A measure of executive function in preschoolers. **Developmental Neuropsychology**, 20, 573–591, 2001.

JERGER, S.; MARTIN, R. C.; PIROZZOLO, F. J. A developmental study of the auditory Stroop effect. **Brain and Language**, v. 35, n. 1, p. 86-104, 1988.

JOLY, M. C. R. A.; WELTER, G. M. R.; MARTINS, R. X.; MARINI, J.; MONTIEL, J. M.; LOPES, F.; DE CARVALHO, M. R. Sistema de avaliação para testes informatizados (SAPI): estudo preliminar. **Psic: Revista da Vetor Editora**, v. 6, n. 2, p. 51-60, 2005.

JORDAN, P. L.; MORTON, J. B. Flankers facilitate 3-year-olds' performance in a card-sorting task. **Developmental Psychology**, v. 44, n. 1, p. 265, 2008.

JURADO, M.; ROSSELLI, M. The elusive nature of executive functions: A review of our current understanding. **Neuropsychology review**, v. 17, n. 3, p. 213-233, 2007.

KLUWE-SCHIAVON, B.; VIOLA, T. W.; GRASSI-OLIVEIRA, R. Modelos teóricos sobre construto único ou múltiplos processos das funções executivas. **Revista Neuropsicología Latinoamericana**, v. 4, n. 2, p. 29-34, 2012.

KARPOV, B.; LURIA, A.; YARBUS, A. Disturbances of the structure of active perception in lesions in the posterior and anterior regions of the brain. **Neuropsychologia**, v. 6, n. 2, p. 157-166, 1968.

KERR, A.; ZELAZO, P. D. Development of “hot” executive function: The Children's Gambling Task. **Brain and Cognition**, v. 55, n. 1, p. 148-157, 2004.

KIRKHAM, N. Z.; CRUESS, L.; DIAMOND, A. Helping children apply their knowledge to their behavior on a dimension-switching task. **Developmental Science**, v. 6, n. 5, p. 449-476, 2003.

KIZILBASH, A.; DONDERS, J. Latent structure of the Wisconsin Card Sorting Test after pediatric traumatic head injury. **Child Neuropsychology**, 5 (4), 224-229, 1999.

KLOO, D.; PERNER, J. Disentangling dimensions in the dimensional change card-sorting task. **Developmental Science**, v. 8, n. 1, p. 44-56, 2005.

KLOO, D.; PERNER, J.; KERSHHUBER, A.; DABERNIG, S.; AICHHORN, M. Sorting between dimensions: conditions of cognitive flexibility in preschoolers. **Journal of Experimental Child Psychology**, v. 100, n. 2, p. 115-134, 2008.

KORKMAN, M.; KIRK, U.; KEMP, S. **NEPSY: A developmental neuropsychological assessment**. Psychological Corporation, 1998.

KUAN, C. Y.; ROTH, K. A.; FLAVELL, R. A.; RAKIC, P. Mechanisms of programmed cell death in the developing brain. **Trends in neurosciences**, v. 23, n. 7, p. 291-297, 2000.

KUNTSI, J.; STEVENSON, J.; OOSTERLAAN, J.; SONUGA-BARKE, E. J. Test-retest reliability of a new delay aversion task and executive function measures. **British Journal of Developmental Psychology**, v. 19, n. 3, p. 339-348, 2001.

LEFÉVRE, B. H. Avaliação Neuropsicológica Infantil. In: ANDRADE, V. M.; SANTOS, F. H.; BUENO, O. F. A. (Orgs.). **Neuropsicologia Hoje**. São Paulo: Artes Médicas, 2004. p. 249-264.

LEHTO, J. E.; JUUJAARVI, P.; KOOISTRA, L.; PULKKINEN, L. Dimensions of executive functioning: Evidence from children. **British Journal of Developmental Psychology**, v. 21, n. 1, p. 59-80, 2003.

LEON-CARRION, J.; GARCÍA-ORZA, J.R.; PÉREZ-SANTAMARÍA, F. J. Development of the inhibitory component of the executive functions in children and adolescents. **International Journal of Neuroscience**, v. 114, n. 10, p. 1291-1311, 2004.

LEVIN, H. S.; CULHANE, K. A.; HARTMANN, J.; EVANKOVICH, K.; MATTSON, A. J.; HARWARD, H.; ...; FLETCHER, J. M. Developmental changes in performance on tests of purported frontal lobe functioning. **Developmental Neuropsychology**, v. 7, n. 3, p. 377-395, 1991.

LEZAK, M. D. The problem of assessing executive functions. **International Journal of Psychology**, v. 17, n. 1-4, p. 281-297, 1982.

LEZAK, M. D.; HOWIESON, D. B.; LORING, D. W.; HANNAY, H. J.; FISCHER, J. S. **Neuropsychological assessment** (4th ed.). New York: Oxford University Press, 2004.

LINDEN, M.V.D.; BREDART, S.; BEERTEN, A. Age-related differences in updating working memory. **British Journal of Psychology**, v. 85, p. 145-151, 1994.

LIVESEY, D. J.; MORGAN, G. A. The development of response inhibition in 4-and 5-year-old children. **Australian Journal of Psychology**, v. 43, n. 3, p. 133-137, 1991.

LURIA, A. R. The directive function of speech in development and dissolution. **Word**, v. 15, n. 2 and 3, 1959.

LURIA, A. R. **Human brain and psychological processes**. New York: Harper and Row, 1966.

LURIA, A. R. **The working brain: An introduction to neuropsychology**. New York: Basic Books, 1973.

MACKWORTH, J. F.; TAYLOR, M. M. The d' measure of signal detectability during vigilance-like situations. **Canadian Journal of Psychology**, v. 17, n. 3, p. 302-325, 1963.

MALLOY, P.; BIHRLE, A.; DUFFY, M.; CIMINO, C. The orbitomedial frontal syndrome. **Archives of Clinical Neuropsychology**, v. 8, n. 3, p. 185-201, 1993.

MANCHESTER, D.; PRIESTLEY, N.; JACKSON, H. The assessment of executive functions: coming out of the office. **Brain Injury**, v.18, n.11, p. 1067-1081, 2004.

MCCARTHY, D. **Manual for the McCarthy Scales of Children's Abilities**. New York: Psychological Corporation, 1972.

MELTZER, Lynn. **Promoting executive function in the classroom**. Guilford Press, 2013.

MERVIS, C. B. Williams syndrome: 15 years of psychological research. **Developmental Neuropsychology**, v. 23, n. 1-2, p. 1-12, 2003.

MESQUITA, M. I. Q. M. de. **Avaliação das funções executivas em crianças: estudo psicométrico, desenvolvimental e neuropsicológico**. Porto, 2011. 201p. Tese - Universidade Fernando Pessoa.

MILLER, George A. The magical number seven, plus or minus two: some limits on our capacity for processing information. **Psychological review**, v. 63, n. 2, p. 81, 1956.

MILLER, E. K.; COHEN, J. D. An integrative theory of prefrontal cortex function. **Annual Review of Neuroscience**, v. 24, p. 167-202, 2001.

MIYAKE, A.; FRIEDMAN, N. P.; EMERSON, M. J.; WITSKI, A. H.; HOWERTER, A.; WAGER, T. D. The unity and diversity of executive functions and their contributions to complex “frontal lobe” tasks: A latent variable analysis. **Cognitive Psychology**, v. 41, n. 1, p. 49-100, 2000.

MIYAKE, A.; FRIEDMAN, N. P.; RETTINGER, J. A.; SHAH, P.; HEGARTY, P. How are visuospatial working memory, executive functioning, and spatial abilities related? A latent variable analysis. **Journal of Experimental Psychology: General**, v. 130, n. 4, p. 621-640, 2001.

MOFFITT, T. E.; ARSENEAULT, L.; BELSKY, D.; DICKSON, N.; HANCOX, R. J.; HARRINGTON, H.; ...; CASPI, A. A gradient of childhood self-control predicts health, wealth, and public safety. **Proceedings of the National Academy of Sciences**, v. 108, n. 7, p. 2693-2698, 2011.

MOFFITT, T. E. The neuropsychology of conduct disorder. **Development and psychopathology**, v. 5, p. 135-135, 1993.

MONETTE, S; BIGRAS, M. La mesure des fonctions exécutives chez les enfants d'âge préscolaire. **Canadian Psychology**, v. 49, n. 4, p. 323-341, 2008.

MONTIEL, J. M; SEABRA, A. G. Teste de trilhas - parte B. In: SEABRA, A. G.; CAPOVILLA, F.C. (Orgs). **Teoria e pesquisa em avaliação neuropsicológica**. São Paulo: Memnon, 2009. p. 94-95.

MONTIEL, J. M; SEABRA, A. G. Teste de Trilhas - Parte A e B. In: SEABRA, A. G.; DIAS, N. M. (Orgs). **Avaliação neuropsicológica cognitiva: atenção e funções executivas**. v. 1. São Paulo: Memnon, 2012. p.79-85.

MORRIS, R. G.; EVENDEN, J. L.; SAHAKIAN, B. J.; ROBBINS, T. W. Computer-aided assessment of dementia: comparative studies of neuropsychological deficits in Alzheimer-type dementia and Parkinson's disease. In: STAJL, S. M.; IVERSEN, S. D.; GOODMAN, E. (Eds). **Chemical Neuroscience**. Oxford University Press, 1987.

MÜLLER, U.; KERNS, K. A.; KONKIN, K. Test–Retest Reliability and Practice Effects of Executive Function Tasks in Preschool Children. **The Clinical Neuropsychologist**, v. 26, n. 2, p. 271-287, 2012.

MUNAKATA, Y. Graded representations in behavioral dissociations. **Trends in Cognitive Sciences**, v. 5, n. 7, p. 309-315, 2001.



NAGLIERI, J. A.; GOLDSTEIN, S. Comprehensive executive functioning index. **Toronto: Multi Health Systems**, 2013.

NATALE, L. L.; TEODORO, M. L. M.; BARRETO, G. V.; HAASE, V. G. . Propriedades psicométricas de tarefas para avaliar funções executivas em pré-escolares. **Revista Psicologia em Pesquisa**, v. 2, p. 23-35, 2008.

NEISSER, U. **Cognitive psychology**. New York: Appleton-Century-Crofts, 1967.  
NIEUWENHUIS, S.; BROERSE, A.; NIELEN, N. M. A.; DE JONG, R. A goal activation approach to the study of executive function: An application to antisaccade tasks. **Brain and Cognition**, v. 56, p. 198-214, 2004.

NIGG, J. T. On inhibition/disinhibition in developmental psychopathology: views from cognitive and personality psychology and a working inhibition taxonomy. **Psychological bulletin**, v. 126, n. 2, p. 220, 2000.

NORMAN, D. A.; SHALLICE, T. Attention to action: Willed and automatic control of behavior. In: SCHWARTZ, G.E.; SHAPIRO, D. (Eds.), **Consciousness and self-regulation**. New York: Plenum Press, 1986. p. 1-18. 1986.

OLIVEIRA, R. M. O conceito de executivo central e suas origens. **Psicologia: Teoria e Pesquisa**, v. 23, n. 4, p. 399-406, 2007.

OVERTON, G. W.; SCOTT, K. G. Automated and manual intelligence testing: Data on parallel forms of the Peabody Picture Vocabulary Test. **American Journal of Mental Deficiency**, 1972.

OWEN, A. M.; DOYON, J.; PETRIDES, M.; EVANS, A. C. Planning and spatial working memory: A positron emission tomography study in humans. **European Journal of Neuroscience**, v. 8, n. 2, p. 353-364, 1996.

OZONOFF, S. Reliability and validity of the Wisconsin Card Sorting Test in studies of autism. **Neuropsychology**, v. 9, n. 4, p. 491, 1995.

PACKWOOD, S.; HODGETS, H. M.; TREMBLAY, S. A multiperspective approach to the conceptualization of executive functions. **Journal of clinical and experimental neuropsychology**, v. 33, n. 4, p. 456-470, 2011.

PARRISH, J.; GEARY, E.; JONES, J.; SETH, R.; HERMANN, B.; Seidenberg, M. Executive functioning in childhood epilepsy: parent-report and cognitive assessment. **Developmental Medicine & Child Neurology**, v. 49, n. 6, p. 412-416, 2007.

PASQUALI, L. **Análise fatorial: Um manual teórico-prático**. Brasília, DF: Laboratório de Pesquisa em Avaliação e Medida, 2006.

PASQUALI, L. **Psicometria: Teoria dos testes na psicologia e na educação**. Petrópolis, RJ: Vozes, 2003.

PASQUALI, L. **Instrumentos psicológicos: manual prático de elaboração**. Brasília: LabPAM/ IBAPP, 1999.

PASSLER, M. A.; ISAAC, W.; HYND, G. W. Neuropsychological development of behavior attributed to frontal lobe functioning in children. **Developmental Neuropsychology**, v. 1, n. 4, p. 349-370, 1985.

PENNINGTON, B. F. Dimensions of executive functions in normal and abnormal development. In: KRASNEGOR, N. A.; LYON, G. R. (Eds.), **Development of the prefrontal cortex: Evolution, neurobiology, and behavior**. Baltimore: Brookes, 1997. p. 265-281. 1997.

PERRY, R. J.; HODGES, J. R. Attention and executive deficits in Alzheimer's disease: A critical review. **Brain**, v. 122, n. 3, p. 383-404, 1999.

PETRIDES, M.; MILNER, B. Deficits on subject-ordered tasks after frontal-and temporal-lobe lesions in man. **Neuropsychologia**, v. 20, n. 3, p. 249-262, 1982.

PINEDA, D. A.; MERCHAN, V. Executive function in young Colombian adults. **International Journal of Neuroscience**, v. 113, n. 3, p. 397-410, 2003.

POSNER, M. I. Psychobiology of attention. In: GAZZANIGA, M. S.; BLAKEMORE, C. (Eds.), **Handbook of psychobiology**. New York: Academic Press, p. 441-480. 1975.

PRIBRAM, K. H. The primate frontal cortex-executive of the brain. **Psychophysiology of the frontal lobes**, p. 293-314, 1973.

PRIETO, G. Testes Informatizados. In: PASQUALI, L e cols. **Instrumentação psicológica: Fundamentos e práticas**. Porto Alegre: Artmed, 2010. p. 467-489.

PRIETO, G.; MUÑIZ, J. Un modelo para evaluar la calidad de los tests utilizados en España. **Papeles del Psicólogo**, v.77, n.1, p.65-75, 2000.

RABBITT, P. Introduction: Methodologies and models in the study of executive function. **Methodology of frontal and executive function**, p. 1-38, 1997.

RATIU, P.; TALOS, I. F.; HAKER, S.; LIEBERMAN, D.; Everett, P. The tale of Phineas Gage, digitally remastered. **Journal of neurotrauma**, v. 21, n. 5, p. 637-643, 2004.

REED, M.A.; PIEN, D. L.; ROTHBART, M. K. Inhibitory self-control in preschool children. **Merrill-Palmer Quarterly (1982-)**, p. 131-147, 1984.

REITER, A.; TUCHA, O.; LANGE, K. W. Executive functions in children with dyslexia. **Dyslexia**, v. 11, n. 2, p. 116-131, 2005.

REN, X.; SCHWEIZER, K.; XU, F. The sources of the relationship between sustained attention and reasoning. **Intelligence**, v. 41, p. 51-58, 2013.

RENNIE, D. A. C.; BULL, R.; DIAMOND, A. Executive functioning in preschoolers: Reducing the inhibitory demands of the dimensional change card sort task. **Developmental neuropsychology**, v. 26, n. 1, p. 423-443, 2004.

REYNOLDS, C. R.; KAMPHAUS, R. W. **BASC: Behavior Assessment System for Children: Manual**. Circle Pines, MN: American Guidance Service, 1992.

RICHMOND, J.; NELSON, C. A. Accounting for change in declarative memory: A cognitive neuroscience perspective. **Developmental Review**, v. 27, n. 3, p. 349-373, 2007.

ROBBINS, T. W.; JAMES, M.; OWEN, A. M.; SAHAKIAN, B. J.; LAWRENCE, A. D.; McINNES, L.; RABBITT, P. Methodologies and models in the study of executive function. In: RABBITT, P (Ed.), **Methodology of frontal and executive function**. East Sussex, UK: Psychology Press Publishers, 1997. p. 1-38.

ROBINSON, S.; GODDARD, L.; DRITSCHER, B.; WISLEY, M.; HOWLIN, P. Executive functions in children with autism spectrum disorders. **Brain and Cognition**, v. 71, n. 3, p. 362-368, 2009.

ROQUE, D. T.; TEIXEIRA, R. A. A.; ZACHI, E. C.; VENTURA, D. F. The use of the Cambridge Neuropsychological Test Automated Battery (CANTAB) in neuropsychological assessment: application in Brazilian research with control children and adults with neurological disorders. **Psychology & Neuroscience**, Rio de Janeiro , v. 4, n. 2, p. 255-265, 2011.

ROSEN, L. D.; WEIL, M. M. Psychologists and technology: A look at the future. **Professional Psychology: Research and Practice**, v. 27, n. 6, p. 635-638, 1996.

ROTH, G.; DICKE, U. Evolution of the brain and intelligence. **Trends in cognitive sciences**, v. 9, n. 5, p. 250-257, 2005.

ROWE, J.; LAVENDER, A.; TURK, V. Cognitive executive function in Down's syndrome. **British Journal of Clinical Psychology**, v. 45, n. 1, p. 5-17, 2006.

ROYALL, D. R.; LAUTERBACH, E. C.; CUMMINGS, J. L.; REEVE, A.; RUMMANS, T. A.; KAUFER, D. I.; ... ; COFFEY, C. E. Executive Control Function: A Review of Its Promise and Challenges for Clinical Research. A Report From the Committee on Research of the American Neuropsychiatric Association. **The Journal of neuropsychiatry and clinical neurosciences**, v. 14, n. 4, p. 377-405, 2002.

SANTOSTEFANO, S. **The cognitive control battery**. Los Angeles, CA: Western Psychological Services, 1988.

SBORDONE, R. J.; LONG, C. J. (Ed.). **Ecological validity of neuropsychological testing**. CRC Press, 1996. p. 15-41

SCHADE, N.; HERNÁNDEZ, P.; ELGUETA, B. Ensayo de aplicación práctica, el test informatizado de Memoria Memopuc. **Revista de Psicología**, XIV v. 001, p. 73-88, 2005.

SCHATZ, P.; BROWNDYKE, J. Applications of computer-based neuropsychological assessment. **The Journal of head trauma rehabilitation**, v. 17, n. 5, p. 395-410, 2002.

SCHLEGEL, R. E.; GILLILAND, K. Development and quality assurance of computer-based assessment batteries. **Archives of Clinical Neuropsychology**, v. 22, p. 49-61, 2007.

SCHMIDT, M. Hit or miss? Insight into executive functions. **Journal of the International Neuropsychological Society**, v. 9, p. 962-964, 2003.

SCHOPP, L.H.; DEMERIS, G.; GLUECKAUF, R.L. Rural Backwaters or Front-Runners? Rural Telehealth in the Vanguard of Psychology Practice. **Professional Psychology: Research and Practice**, v. 37, n. 2, p. 165-173, 2006.

SHALLICE, T.; BURGESS, P. W. The domain of supervisory processes and temporal organisation of behaviour. **Philosophical Transactions of the Royal Society of London B: Biological Sciences**, v. 351, n. 1346, p. 1405-1412, 1996.

SHIFFRIN, R. M.; SCHNEIDER, W. Controlled and automatic human information processing: II. perceptual learning, automatic attending, and a general theory. **Psychological Review**, v. 84, n. 2, p. 127-190, 1977.

SHING, Y. L.; LINDENBERGER, U.; DIAMOND, A.; LI, S. C.; DAVIDSON, M. C. Memory maintenance and inhibitory control differentiate from early childhood to adolescence. **Developmental neuropsychology**, v. 35, n. 6, p. 679-697, 2010.

SIEGEL, L. S. Working memory and reading: A life-span perspective. **International Journal of Behavioral Development**, v. 17, n. 1, p. 109-124, 1994.

SMIDTS, D P., JACOBS, R., ANDERSON, V. The Object Classification Task for Children (OCTC): A measure of concept generation and mental flexibility in early childhood. **Developmental Neuropsychology**, 26, 385–401, 2004.

SMITH, E. E.; JONIDES, J. Storage and executive processes in the frontal lobes. **Science**, v. 283, n. 5408, p. 1657-1661, 1999.

SOPRANO, A. M. Evaluación de las funciones ejecutivas en el niño. **Revista de Neurología**, v. 37, n. 1, p. 44-50, 2003.

SOTO-PÉREZ, F.; MARTÍN, M. A. F.; GÓMEZ, F. J. Tecnologías y Neuropsicología: Hacia una Ciber-Neuropsicología. **Cuadernos de Neuropsicología**, v. 4, n. 2, p. 112-131, 2010.

SPREEN, O.; STRAUSS, E. **A compendium of neuropsychological tests: Administration, norms, and commentary**. New York: Oxford University Press, 1998.

ST CLAIR-THOMPSON, H. L.; GATHERCOLE, S. E. Executive functions and achievements in school: Shifting, updating, inhibition, and working memory. **The Quarterly Journal of Experimental Psychology**, v. 59, n. 4, p. 745-759, 2006.

STELZER, F.; CERVIGNI, A. M.; MARTINO, P. Desarrollo de las funciones ejecutivas en niños preescolares: una revisión de algunos de sus factores moduladores. **Liber.**, ene./jun., v. 17, n. 1, 2011.

STRAUSS, A. A.; LEHTINEN, L. E. **Psychopathology and education of the brain-injured child**. Oxford: Grune & Stratton, 1947.

STROMMEN, E. A. Verbal self-regulation in a children's game: Impulsive errors on "Simon says." **Child Development**, v. 44, n. 4, p. 849-853, 1973.

STROOP, J. R. Studies of interference in serial verbal reactions. **Journal of Experimental Psychology**, v. 18, n. 6, p. 643-662, 1935.

STUSS, D. T.; ALEXANDER, M. P. Executive functions and the frontal lobes: a conceptual view. **Psychological research**, v. 63, n. 3-4, p. 289-298, 2000.

STUSS, D. T.; BENSON, D. F. **The frontal lobes**. New York: Raven, 1986.

STUSS, D. T.; SHALLICE, T.; ALEXANDER, M. P.; PICTON, T. W. A Multidisciplinary Approach to Anterior Attentional Functions. **Annals of the New York Academy of Sciences**, v. 769, n. 1, p. 191-212, 1995.

SWANSON, J. M. Role of executive function in ADHD. **Journal of Clinical Psychiatry**, v. 64(suppl 14), p. 35-39, 2003.

SWANSON, H. L.; HOWELL, M. Working memory, short-term memory, and speech rate as predictors of children's reading performance at different ages. **Journal of Educational Psychology**, v. 93, n. 4, p. 720, 2001.

TARULLO, A. R.; MLINER, S.; GUNNAR, M. R. Inhibition and exuberance in preschool classrooms: Associations with peer social experiences and changes in cortisol across the preschool year. **Developmental psychology**, v. 47, n. 5, p. 1374, 2011.

TIRAPU-USTÁRROZ, J.; GARCÍA-MOLINA, A.; LUNA-LARIO, P.; ROIG-ROVIRA, T.; PELEGRÍN-VALERO, C. Modelos de funciones y control ejecutivo (I). **Revista de Neurología**, v. 46, n. 11, p. 684-692, 2008a.

TIRAPU-USTÁRROZ, J.; GARCÍA-MOLINA, A.; LUNA-LARIO, P.; ROIG-ROVIRA, T.; PELEGRÍN-VALERO, C. Modelos de funciones y control ejecutivo (II). **Revista de Neurología**, v. 46, n. 12, p. 742-750, 2008b.

TIRAPU-USTÁRROZ, J.; MUÑOZ-CÉSPEDES, J. M.; PELEGRÍN-VALERO, C. Funciones ejecutivas: necesidad de una integración conceptual. **Revista de Neurología**, v. 34, n. 7, p. 673-685, 2002.

TOWSE, J. N.; REDBOND, J.; HOUSTON-PRICE, C. M.; COOK, S. Understanding the dimensional change card sort: Perspectives from task success and failure. **Cognitive Development**, v. 15, n. 3, p.347-365, 2000.

TREVISAN, B. T.; SEABRA, A. G. Teste de Trilhas para pré-escolares In: SEABRA, A. G.; DIAS, N. M. (Orgs). **Avaliação neuropsicológica cognitiva: atenção e funções executivas**. v. 1. São Paulo: Memnon, 2012. p.92-100.

UEHARA, E.; CHARCHAT-FICHMAN, H.; LANDEIRA-FERNANDEZ, J. Funções executivas: Um retrato integrativo dos principais modelos e teorias desse conceito. **Revista Neuropsicologia Latinoamericana**, v. 5, n. 3, p. 25-37, 2013.

UEHARA, E.; LANDEIRA-FERNANDEZ, J. Um panorama sobre o desenvolvimento da memória de trabalho e seus prejuízos no aprendizado escolar. **Ciências e Cognição/Science and Cognition**, v. 15, n. 2, 2010.

URBINA, Susana. **Fundamentos da testagem psicológica**. Grupo A, 2007.

VYGOTSKY, L. S. **Pensamento e linguagem**. São Paulo: Martins Fontes, 1991.

WALKER, R.; HUSAIN, M.; HODGSON, T. L.; HARRISON, J.; KENNARD, C. Saccadic eye movement and working memory deficits following damage to human prefrontal cortex. **Neuropsychologia**, v. 36, n. 11, p. 1141-1159, 1998.

WASSERMAN, T.; WASSERMAN, L. D. Toward an integrated model of executive functioning in children. **Applied Neuropsychology: Child**, v. 2, n. 2, p. 1-9, 2013.

WATKINS, L. H., SAHAKIAN, B. J., ROBERTSON, M. M., VEALE, D. M., ROGERS, R. D., PICKARD, K. M., AITKEN, M. R. F.; ROBBINS, T. W. Executive function in Tourette's syndrome and obsessive-compulsive disorder. **Psychological Medicine**, v. 35, p. 571-582, 2005.

WECHSLER, D. **Manual for the Wechsler Intelligence Scale for Children-Revised**. New York: Psychological Corporation, 1974.

WELSH, M. C.; PENNINGTON, B. F.; GROISSER, D. B. A normative developmental study of executive function: A window on prefrontal function in children. **Developmental Neuropsychology**, v. 7, n. 2, p. 131-149, 1991.

WIEBE, S. A.; ESPY, K. A.; CHARAK, D. Using confirmatory factor analysis to understand executive control in preschool children: I. Latent structure. **Developmental Psychology**, v. 44, n. 2, p. 575, 2008.

WILD, K.; HOWIESON, D.; WEBBE, F.; SEELYE, A.; KAYE, J. Status of computerized cognitive testing in aging: a systematic review. **Alzheimer's & Dementia**, v. 4, n. 6, p. 428-437, 2008.

WILSON, B. A.; ALDERMAN, N.; BURGESS, P. W.; EMSLIE, H. C.; EVANS, J. J. **The Behavioural Assessment of the Dysexecutive Syndrome**. Thames Valley Test Company: Flempton, Bury St Edmunds, 1996.

WOO, E. Computerized neuropsychological assessments. **CNS spectrums**, v. 13, n. 10 Suppl 16, p. 7-14, 2008.

WU, K. K.; CHAN, S. K.; LEUNG, P. W.; LIU, W. S.; LEUNG, F. L.; NG, R. Components and developmental differences of executive functioning for school-aged children. **Developmental Neuropsychology**, v. 36, n. 3, p. 319-337, 2011.

ZELAZO, P.; CRAIK, F.; BOOTH, L. Executive function across the life span. **Acta Psychologica**, v. 115, p. 167-183, 2004.

ZELAZO, P. D.; CARTER, A.; REZNICK, J. S.; FRYE, D. Early development of executive function: A problem-solving framework. **Review of general psychology**, v.1, n. 2, p. 198-226, 1997.

ZELAZO, P. D.; FRYE, D. Cognitive complexity and control: II. The development of executive function. **Current Directions in Psychological Science**, v. 7, n. 4, p. 121-126, 1998.

ZELAZO, P. D.; FRYE, D.; RAPUS, T. An age-related dissociation between knowing rules and using them. **Cognitive Development**, v. 11, n. 1, p. 37-63, 1996.

ZELAZO, P. D.; MULLER, U.; FRYE, D.; MARCOVITCH, S. The development of executive function in early childhood. **Monographs of the Society for Research on Child Development**, v. 68, n. 3, vii, p. 137, 2003.

ZELAZO, P.; QU, L.; MULLER, U. (2005). Hot and cool aspects of executive function: Relations in early language development. *In: SCHNEIDER, W.; SCHUMANN-HEGSTELER, R.; SODIAN, B. (Eds.), Young children's cognitive development: Interrelations among executive functioning, working memory, verbal ability and theory of mind.* Mahwah, NJ: Lawrence Erlbaum Associates, 2005. p. 71-93.

ZELAZO, P. D.; REZNICK, J. S.; PIÑÓN, D. E. Response control and the execution of verbal rules. **Developmental Psychology**, v. 31, n. 3, p. 508, 1995.



## 9

## Anexos

## Anexo I – Parecer do Comitê de Ética (PUC-Rio)

Pontifícia Universidade Católica do Rio de Janeiro  
Câmara de Ética de Pesquisa da PUC – Rio

A Comissão de Ética na Pesquisa da PUC-Rio foi constituída como uma Câmara específica do Conselho de Ensino e Pesquisa conforme decisão deste órgão colegiado com a atribuição de avaliar projetos de pesquisa do ponto de vista de suas implicações éticas.

**PARECER DA COMISSÃO DE ÉTICA NA PESQUISA DA PUC-RIO (2011-11)****Identificação:**

**Título:** Validação de uma bateria computadorizada para avaliar habilidades executivas em crianças pré-escolares (Departamento de Psicologia da PUC-Rio)

**Autora:** Emmy Uehara Pires (doutoranda do Departamento de Psicologia da PUC-Rio)

**Prof. orientador:** Jesus Landeira - Fernandez ( Departamento de Psicologia da PUC-Rio)

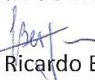
**Profa co-orientadora:** Helenice Charchat - Fichman

**Apresentação:** O estudo objetiva construir e validar uma bateria ( ou apenas um teste ) computadorizada para avaliar as habilidades executivas em crianças de três a seis anos de idade regularmente matriculadas em creches e no ensino infantil de instituições particulares e públicas. Visa também a verificar a qualidade da bateria computadorizada como instrumento de avaliação e inovação tecnológica .

**Aspectos Éticos:** A pesquisa que envolve crianças, pressupõe uma justificativa clara por essa opção, cuidado esse observado no projeto . É importante a análise que é apresentada sobre os benefícios e limitações da avaliação psicológica computadorizada . O Termo de Consentimento Livre e Esclarecido a ser assinado pelo responsável pela criança deixa claro o objetivo do estudo e que a participação no mesmo é voluntária podendo a qualquer momento ser interrompida se desejar. Registra os cuidados de acompanhamento da criança na realização dos procedimentos propostos. Garante a confidencialidade e a privacidade dos sujeitos.

O projeto revela respeito aos princípios e valores da Universidade conforme seu Marco Referencial, Estatuto e Regimento no que se refere às responsabilidades de seu corpo docente e discente.

**Parecer:** Considerando os elementos expostos, somos de parecer favorável, à aprovação do projeto quanto aos princípios e critérios estabelecidos pela Comissão de Ética na Pesquisa da PUC-Rio.

  
Prof. José Ricardo Bergmann  
Presidente do Conselho de Ensino e Pesquisa

Rio de Janeiro, 21 de outubro de 2011

## Anexo II – Termo de consentimento livre e esclarecido

1ª via (participante)

Prezado Responsável,

Nossa equipe do Núcleo de Neuropsicologia Clínica e Experimental da PUC-Rio está realizando um estudo intitulado "*Validação de um instrumento computadorizado para avaliar habilidades executivas em crianças pré-escolares*". Este estudo tem como objetivo a obtenção de parâmetros acerca do desempenho de crianças pré-escolares em tarefas de habilidades executivas tais como flexibilidade cognitiva, memória de trabalho, controle inibitório, planejamento e fluência verbal.

Durante a realização dessa pesquisa será aplicado nas crianças tarefas visando avaliar as habilidades mencionadas acima. Para o presente estudo, será necessário 1 encontro de meia hora com a criança, podendo variar para mais ou para menos, dependendo da motivação da criança.

Os procedimentos a serem realizados não trazem risco à saúde e são completamente isentos de qualquer benefício financeiro ou tipo de ressarcimento. Deixo informado também, que a participação é voluntária e poderá ser interrompida em qualquer fase de pesquisa, sem penalização alguma. Após a sua autorização, será estudado junto aos professores, um horário para a aplicação dos testes, em que não prejudique o andamento acadêmico do aluno.

Esclareço também, que em qualquer momento da pesquisa, me disponho a esclarecer quaisquer dúvidas sobre o estudo em andamento e garanto desde já o sigilo que assegura a privacidade quanto aos dados confidenciais envolvidos na pesquisa e que seus nomes jamais serão divulgados.

Por fim, informo que este trabalho foi aprovado pelo Comitê de Ética em Pesquisa da PUC-Rio (telefone de contato: 3527-1186 falar com Prof.Landeira).

Caso autorize a participação do seu filho(a) nesta pesquisa, peço que preencha os dados abaixo, destaque o canhoto e devolva à escola. Agradeço a sua colaboração e nos colocamos ao seu dispor para quaisquer dúvidas.

Atenciosamente,

---

Emmy Uehara Pires

**Orientador: Jesus Landeira-Fernandez, e-mail: [landeira@puc-rio.br](mailto:landeira@puc-rio.br), Tel: 3527-1186**  
**Doutoranda: Emmy Uehara Pires, e-mail: [emmy.uehara@gmail.com](mailto:emmy.uehara@gmail.com), Cel: 8872-1512**

## 2ª via (instituição)

Eu, \_\_\_\_\_, pai (ou responsável) \_\_\_\_\_ do \_\_\_\_\_ menor \_\_\_\_\_, declaro que fui informado sobre as características e finalidades do estudo em questão e autorizo o meu filho/minha filha (ou dependente) a participar voluntariamente da pesquisa, realizada pelo Laboratório de Clínica e Neurociências da PUC-Rio.

Rio de Janeiro, ..... de ..... de 20.....

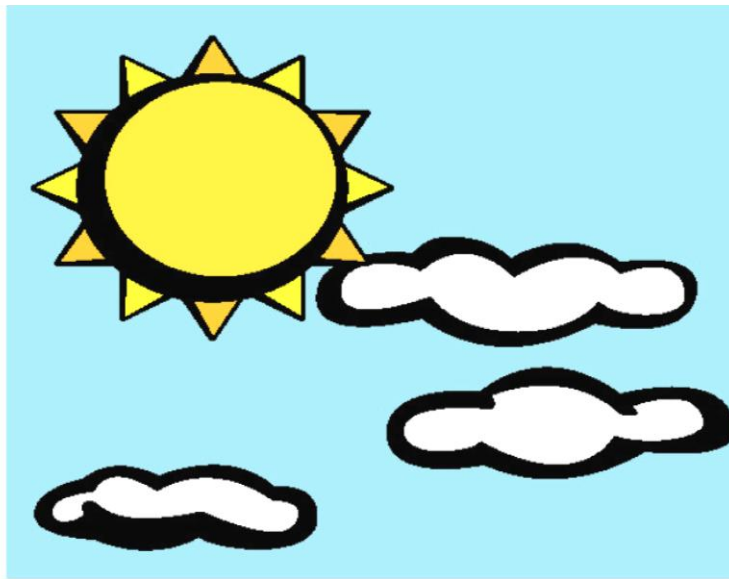
Assinatura do pai (ou responsável): \_\_\_\_\_

Telefones para contato: \_\_\_\_\_

Escola: \_\_\_\_\_ Data de Nascimento: \_\_\_\_\_

Série: \_\_\_\_\_

**Anexo III – Tarefa Noite e Dia (Adaptado de Berlin e Bohlin, 2002): figuras utilizadas.**



**Anexo IV – Tarefa de alcance de dígitos (Adaptado de Wechsler, 1949)**

Nome: \_\_\_\_\_ Sexo: \_\_\_\_\_

Data de Nascimento: \_\_\_\_\_ Idade: \_\_\_\_\_

Escolaridade: \_\_\_\_\_

Ordem Direta

Série	1º ensaio	acertos	2º ensaio	acertos	3º ensaio	acertos
3	3-8-6		6-1-2		2-9-6	
4	3-4-1-7		6-1-5-8		2-1-3-8	
5	8-4-2-3-9		5-2-1-8-6		7-3-4-9-5	
6	3-8-9-1-7-4		7-9-6-4-8-3		1-6-2-3-8-7	
7	5-1-7-4-2-3-8		9-8-5-2-1-6-3		5-8-4-7-3-1-9	
8	1-6-4-5-9-7-6-3		2-9-7-6-3-1-5-4		4-1-5-8-6-2-7-9	
9	5-3-8-7-1-2-4-6-9		4-2-6-9-1-7-8-3-5		8-5-2-9-6-3-4-7-1	

Total pontuação ordem direta: \_\_\_\_\_

Ordem Inversa

Série	1º ensaio	acertos	2º ensaio	acertos	3º ensaio	acertos
2	2-5		6-3		7-2	
3	5-7-4		2-5-9		9-4-1	
4	7-2-9-6		8-4-9-3		1-8-5-7	
5	4-1-3-5-7		9-7-8-5-2		6-2-5-9-1	
6	1-6-5-2-9-8		3-6-7-1-9-4		4-7-1-3-9-2	
7	8-5-9-2-3-4-2		4-5-7-9-2-8-1		2-5-9-4-7-3-6	
8	6-9-1-6-3-2-5-8		3-1-7-9-5-4-8-2		7-4-1-8-5-2-6-9-3	

Total pontuação ordem inversa: \_\_\_\_\_

**Anexo V – Tarefa de Fluência Verbal Semântica (Formato reduzido)**

<b>Tempo</b>	<b>Animais</b>	<b>Frutas</b>	<b>Roupas</b>
0-10"			
11-20"			
21-30"			
31-40"			
41-50"			
51-60"			
Total			
Perseveração			
Derivação			
Intrusão			
Categ. Geral			
Nome Próprio			
Outros			